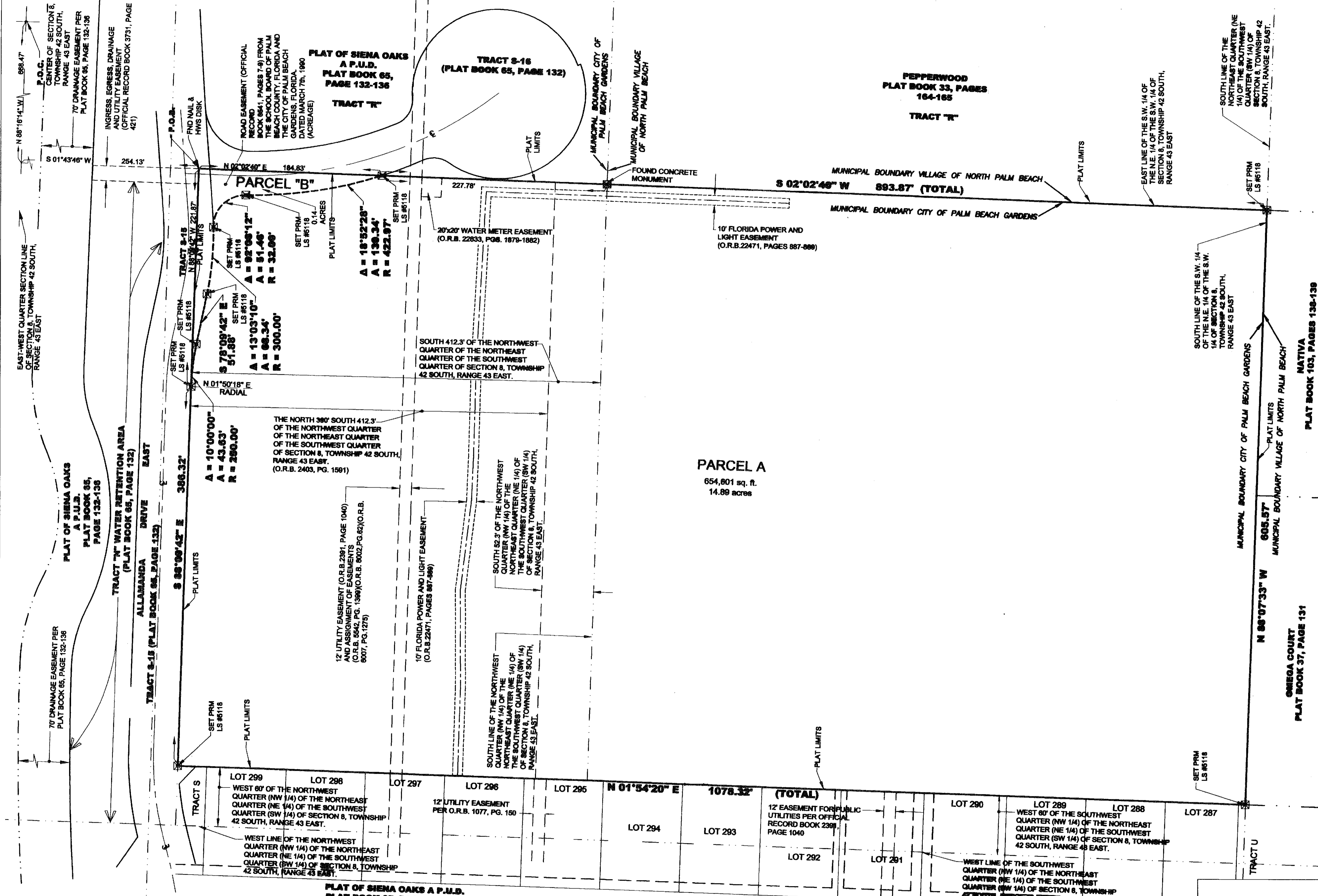


# ALLAMANDA ELEMENTARY

PORTION OF SOUTHWEST ONE-QUARTER (S.W.1/4), SECTION 8, TOWNSHIP 42 SOUTH, RANGE 43 EAST  
CITY OF PALM BEACH GARDENS, PALM BEACH COUNTY, FLORIDA



**NOTICE:**  
THIS PLAT, AS RECORDED IN ITS GRAPHIC FORM, IS THE OFFICIAL DEPICTION OF THE SUBDIVIDED LANDS DESCRIBED HEREIN AND WILL IN NO CIRCUMSTANCES BE SUPPLANTED IN AUTHORITY BY ANY OTHER GRAPHIC OR DIGITAL FORM OF THE PLAT. THERE MAY BE ADDITIONAL RESTRICTIONS THAT ARE NOT RECORDED ON THIS PLAT THAT MAY BE FOUND IN THE PUBLIC RECORDS OF THIS COUNTY.

**PLAT NOTES:**  
☒ INDICATES SET PERMANENT REFERENCE MONUMENT (P.R.M.) 4"x4"x24" CONCRETE MONUMENT WITH BRASS DISC NO. LS #5118 (UNLESS NOTED OTHERWISE).  
BEARINGS SHOWN ARE RELATIVE TO THE SOUTH LINE OF ALLAMANDA DRIVE EAST ALSO KNOWN AS TRACT S-15 ROAD EASEMENT PLAT OF SIENA OAKS, A P.U.D., ACCORDING TO THE PLAT THEREOF AS RECORDED IN P.B. 65, PAGES 132-136 OF THE PUBLIC RECORDS OF PALM BEACH COUNTY, FLORIDA HAVING A BEARING OF S88°09'42"E. WHICH SAID BEARING IS RELATIVE TO THE PALM BEACH COUNTY SECTIONAL DATA FOR SECTION 8, TOWNSHIP 42 SOUTH, RANGE 43 EAST.

**LEGEND:**  
 C CENTERLINE  
 L.B. FLORIDA DEPARTMENT OF BUSINESS AND PROFESSIONAL REGULATION CERTIFICATE OF AUTHORIZATION LICENSED BUSINESS DESIGNATION  
 FND. FOUND  
 O.R.B. OFFICIAL RECORD BOOK  
 P.B. PLAT BOOK  
 P.B.C.R. PALM BEACH COUNTY RECORD  
 P.O.B. POINT OF BEGINNING  
 P.O.C. POINT OF COMMENCEMENT  
 PG. PAGE  
 ☒ PERMANENT REFERENCE MONUMENT (PRM) LS #5118  
 SQ. FT. SQUARE FEET



PREPARED BY:  
 **Heller - Weaver and Sheremeta, inc.**  
 Engineers ... Surveyors and Mappers  
 L.B. NO. 0003440 310 S.E. 1ST STREET, SUITE 4 DELRAY BEACH, FLORIDA 33483  
 (561) 243-8700 - FAX (561) 243-8777